

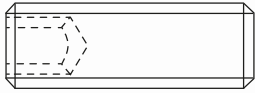


MULTI-FASTENERS

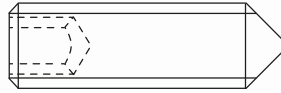


**CATÁLOGO DE
PRODUCTOS**

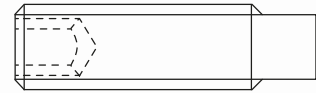
ESPÁRRAGOS Y LLAVES ALLEN



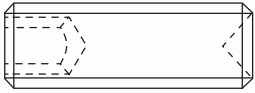
DIN 913 / ISO 4026 45H
DIN 913 / ISO 4026 45H ROSCA FINA
 Hexágono interior, con punta plana



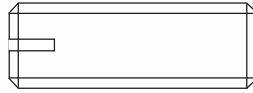
DIN 914 / ISO 4027 45H
 Hexágono interior, con punta cónica



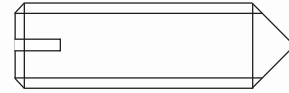
DIN 915 / ISO 4028 45H
 Hexágono interior, con pivote



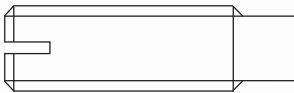
DIN 916 / ISO 4029 45H
DIN 916 / ISO 4029 45H MOLETEADOS
 Hexágono interior, con chaflán y cono interno



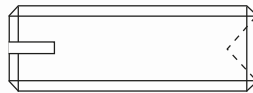
DIN 551 / ISO 4766 14H
 Con ranura y punta plana



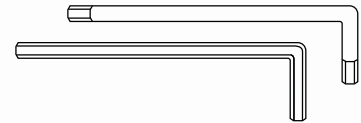
DIN 553 / ISO 7434 14H
 Con ranura y punta cónica



DIN 417 / ISO 7435 14H
 Con ranura y pivote



DIN 438 / ISO 7436 14H
 Con ranura y con chaflán y cono interno



LLAVES ALLEN

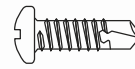
TORNILLOS ROSCA CHAPA



DIN 7981 C-H
 Con cabeza alomada



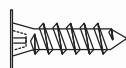
DIN 7982 C-H
 Con cabeza plana avellanada



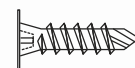
DIN 7504-N
 Con cabeza alomada



DIN 7504-P
 Con cabeza plana avellanada

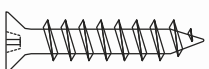


Tornillos con cabeza extraplana
 Punta Normal

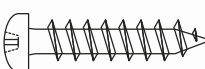


Tornillos con cabeza extraplana
 Punta broca

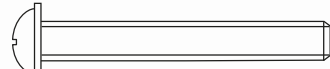
TORNILLOS PARA MADERA / AGLOMERADO



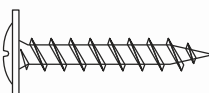
REF. 7505-A
 Con cabeza plana avellanada



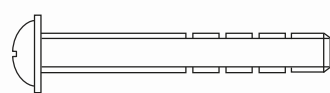
REF. 7505-B
 Con cabeza alomada



TORNILLOS PARA TIRADOR M-4
 Sin cortes

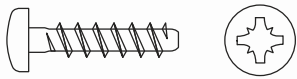


TORNILLOS PARA TRASERA

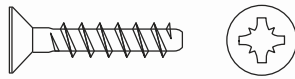


TORNILLOS PARA TIRADOR M-4
 Con cortes

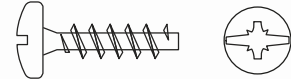
TORNILLOS PARA PLÁSTICO



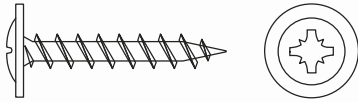
RP81-F
Con cabeza alomada, sin punta



RP82-F
Con cabeza avellanada, sin punta

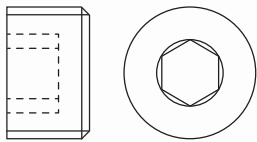


RP81-F Combi
Con cabeza alomada Phil/ranura, sin punta

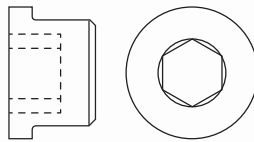


RP81 Arand.
Con cabeza alomada y arandela

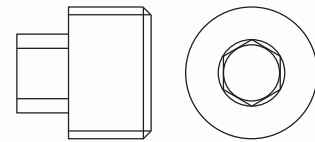
TAPONES ROSCADOS, ROSCA MÉTRICA Y ROSCA GAS



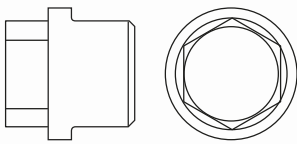
DIN 906 5.8 ZN
Con rosca cónica y hexágono interior



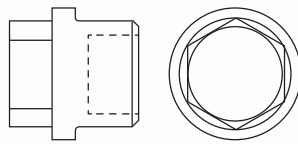
DIN 908 5.8 ZN
Con aro y hexágono interior



DIN 909 5.8 ZN
Con rosca cónica y hexágono exterior

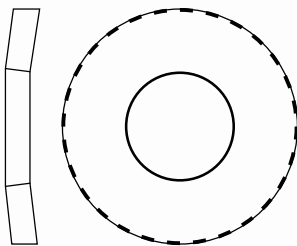


DIN 910 5.8 ZN
Con aro y hexágono exterior

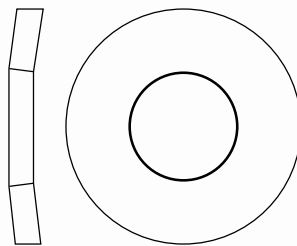


DIN 7604 5.8 ZN
Con hexágono exterior

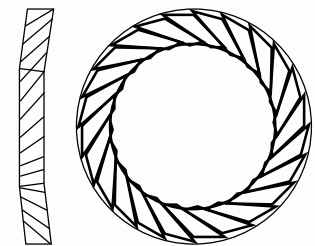
MUELLES DE PLATILLO / ARANDELAS



DIN 2093
Series A, B, C y medidas especiales



DIN 6796
Arandelas elásticas



Arandelas de Seguridad
Tipo AET

MULTI-FASTENERS

POL. IND. COVA SOLERA
CALLE PARIS, 6
08191 RUBÍ (BARCELONA)

TEL. 93 699 27 67

FAX. 93 699 47 12

MAIL comercial@multi-fasteners.com